

# LEARNING FRAMEWORK

To improve educational access, equity and quality for all children

## System



What are the operating policies, environment and partnerships needed to strengthen access, equity and quality for all children?

**Policies & operating environment**

**Partnerships to deepen or scale impact**

## Organisation



What do organisations require to become more effective and sustainable?

**Governance & compliance mechanisms**

**Operating models & plans for sustainability**

**Hiring & talent development**

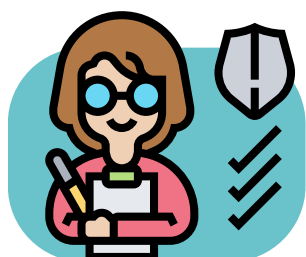
**Operations**

**Monitoring, evaluation & learning systems**

**Culture of innovation**

**Organisational resilience**

## Leadership



How do organisations hire and develop leaders who will drive the organisations' goals?

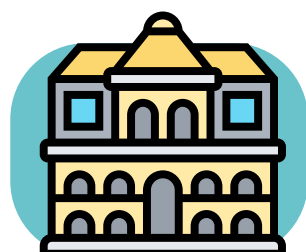
**Building a leadership team**

**Cultivating strong relationships**

**Planning for succession**

**Nurturing & retaining leaders**

## School



What makes a child's learning journey safe, joyful and thriving?

**School set-up & infrastructure**

**Education model, curriculum & pedagogy**

**Safety, culture & well-being**

**Data to improve quality**

**Hiring, retaining & developing of school staff**

**Parent & community engagement**

## Questions?

If you have questions or comments about the framework, please write to [ajay\\_pinjani@globalschoolsforum.org](mailto:ajay_pinjani@globalschoolsforum.org)

